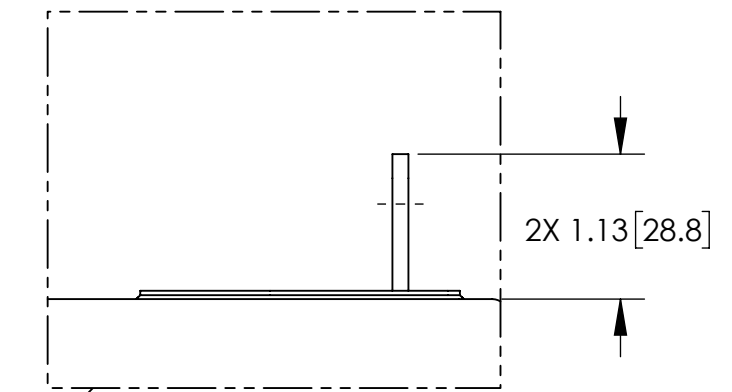
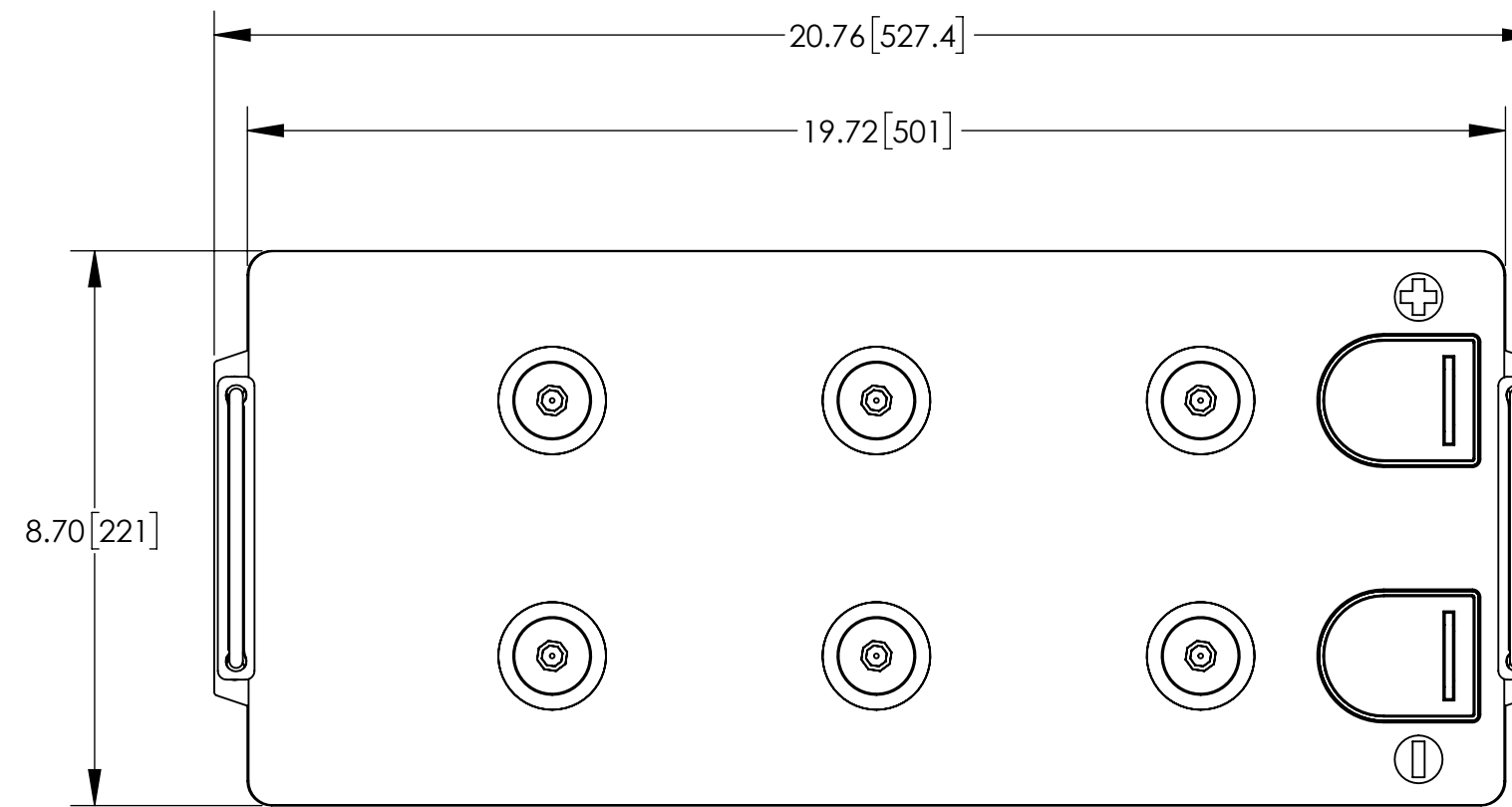


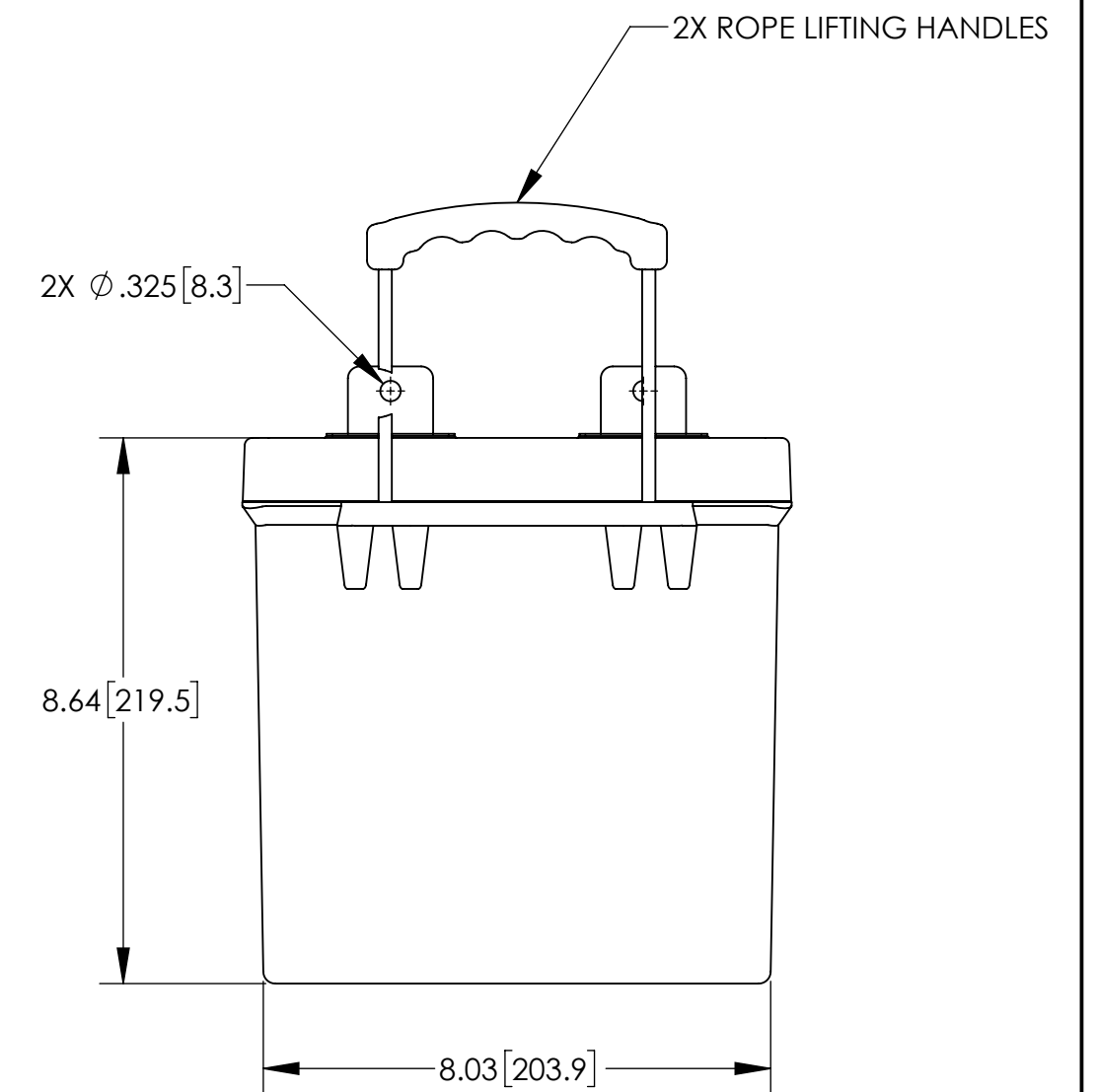
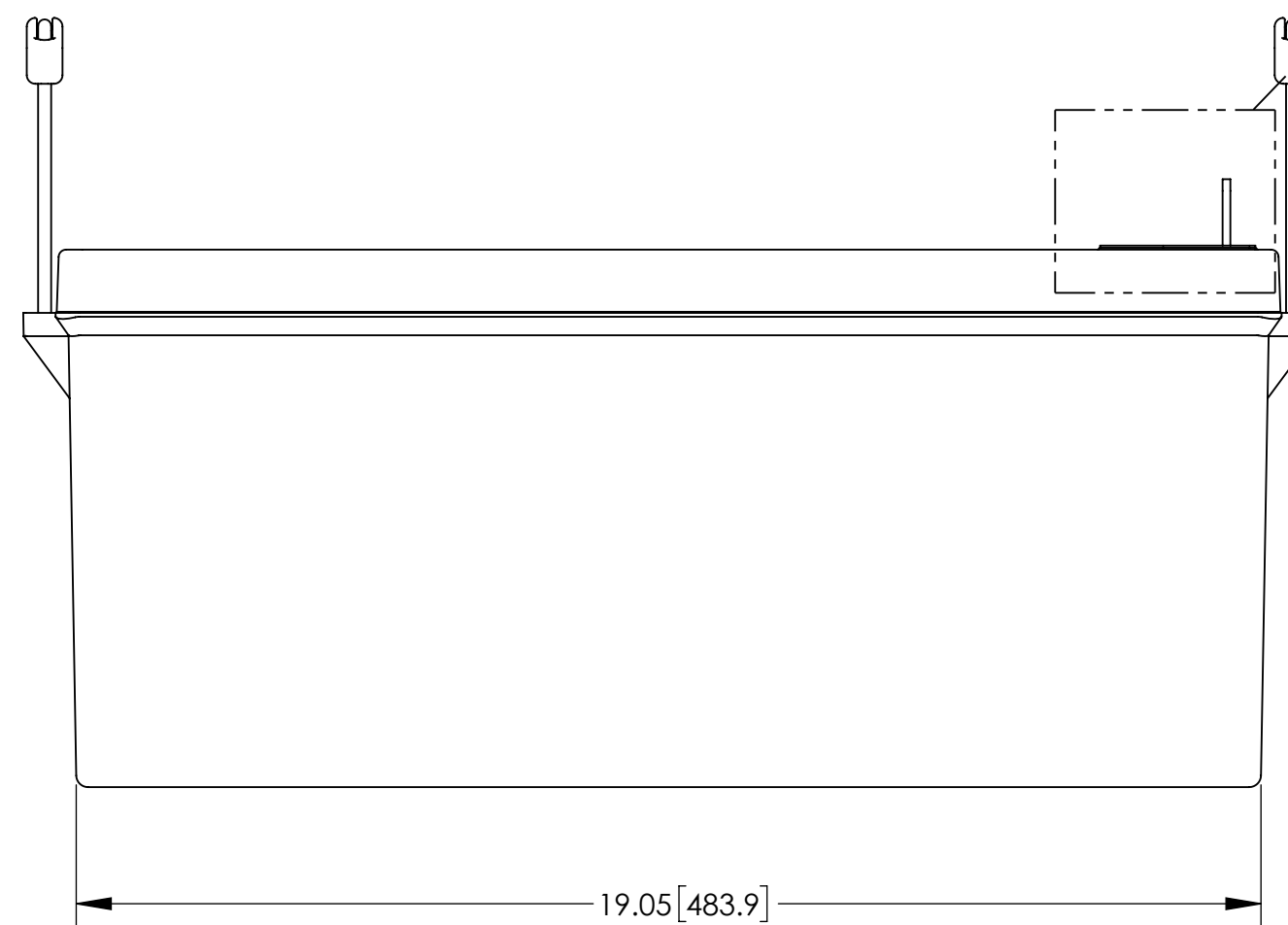
NOTES: UNLESS OTHERWISE SPECIFIED

1. SEE DRAWING NO. CB-00294 AND PROCEDURE P-1000 FOR ASSEMBLY AND TEST INSTRUCTIONS. PROCEDURES AND ASSEMBLY DRAWING ARE FOR INTERNAL USE ONLY.
2. ALL TESTING IS PERFORMED IAW BATTERY COUNCIL INTERNATIONAL STANDARDS.
3. ALL DIMENSIONS ARE IN INCHES [MILLIMETERS].
4. TERMINAL HARDWARE KIT PROVIDED, PART NUMBER 6916.

REVISIONS			
REV	DESCRIPTION	DATE	APPROVED
A	UPDATED FOR EU 1542 COMPLIANCE	8/16/24	PH



HEAVY DUTY L-BLADE  
SCALE 2 : 3



PART NUMBER	AGM-12210L
NOMINAL WEIGHT	124 LBS [56.2 KG]
NOMINAL VOLTAGE	12 VOLTS
RATED CAPACITY @ 20-HR RATE TO 1.75VPC @ 77°F(25°C)	210 AH
RATED ENERGY @ 20-HR RATE TO 1.75VPC @ 77°F(25°C)	2520 WH
NOMINAL INTENAL RESISTANCE @ 77°F(25°C)	2.37 MILLIOHMS
MAXIMUM POWER @ 77°F(25°C)	15.2 KW
CAPACITY FADE	TYPICALLY 50% OR 80% AT EOL (USER DEFINED)
POWER FADE	TYPICALLY 50% OR 80% AT EOL (USER DEFINED)
ENERGY ROUND TRIP EFFICIENCY	80%

ENVELOPE DRAWING

UNLESS OTHERWISE SPECIFIED DIMENSIONS ARE IN INCHES TOLERANCES ARE:			CONTRACT NO.		CONCORDE BATTERY CORPORATION 2009 SAN BERNARDINO RD, W. COVINA, CA 91790			
FRACTIONS	DECIMALS	ANGLES	APPROVALS	DATE	TITLE			
± 1/32	.XX ± .12 .XXX ± .060	± 1°	DRAWN N. SANCHEZ	7/22/20	BATTERY, 12 VOLT, AGM-12210L			
TREATMENT	NONE	CHECKED AMIII	7/23/20	SIZE C	CAGE CODE 63017	DWG NO. AGM-12210L	REV A	
FINISH	NONE	APPROVED PH	7/23/20	SCALE 1:3	SHEET 1 OF 1			
SIMILAR TO	CALC WT	ISSUED DH	8/19/24					