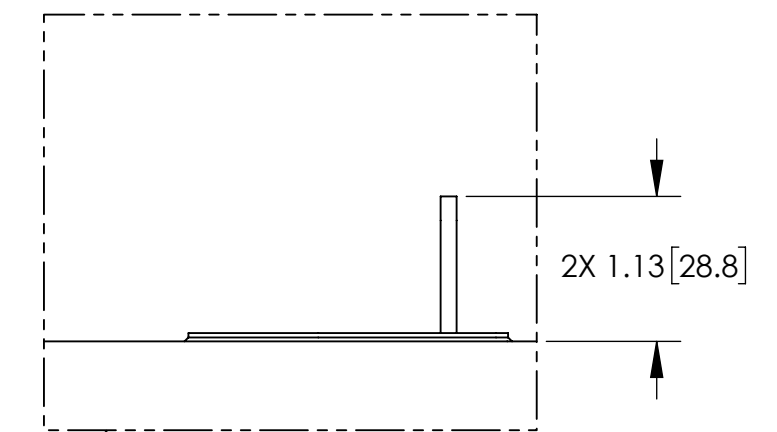
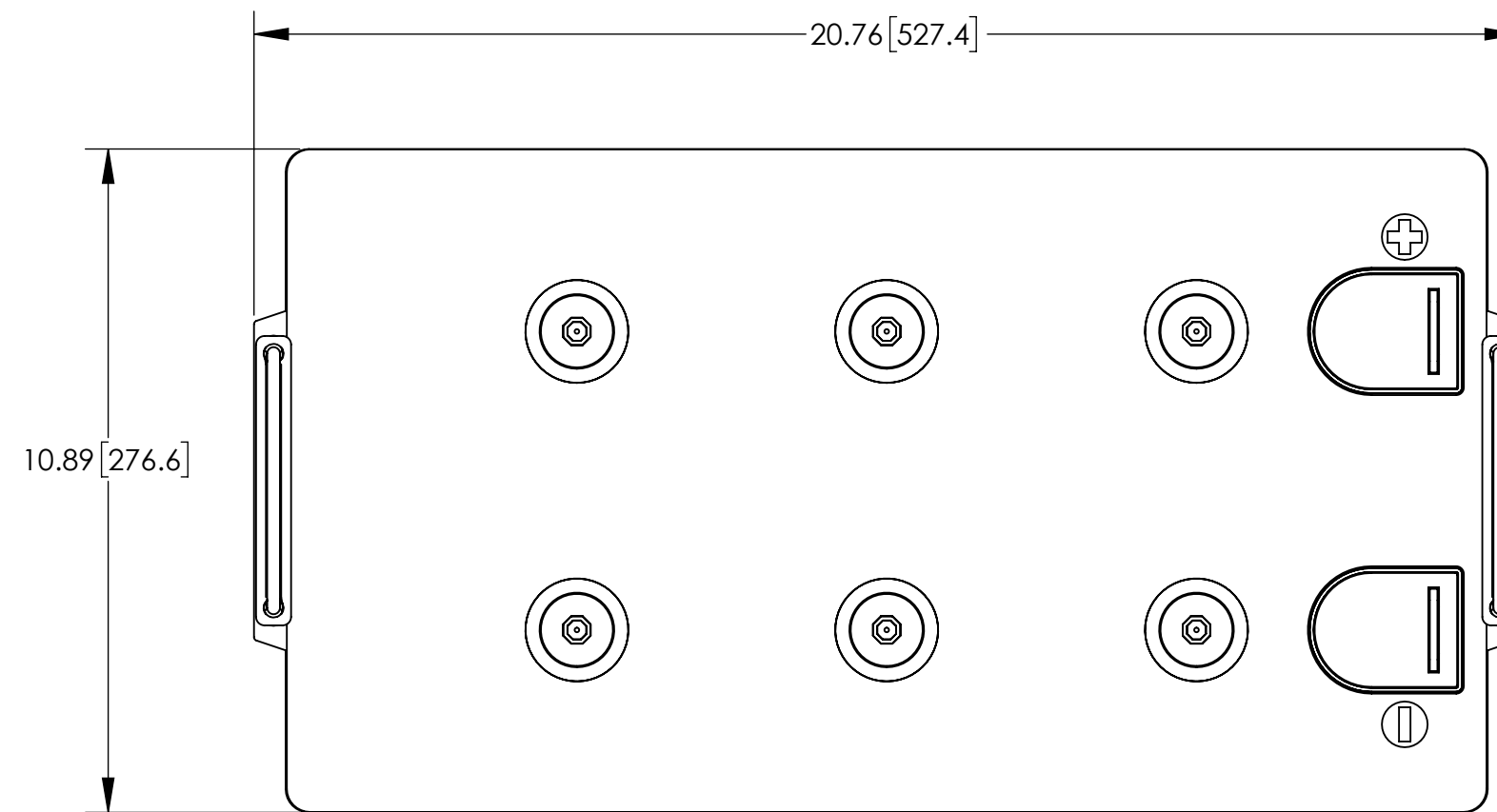


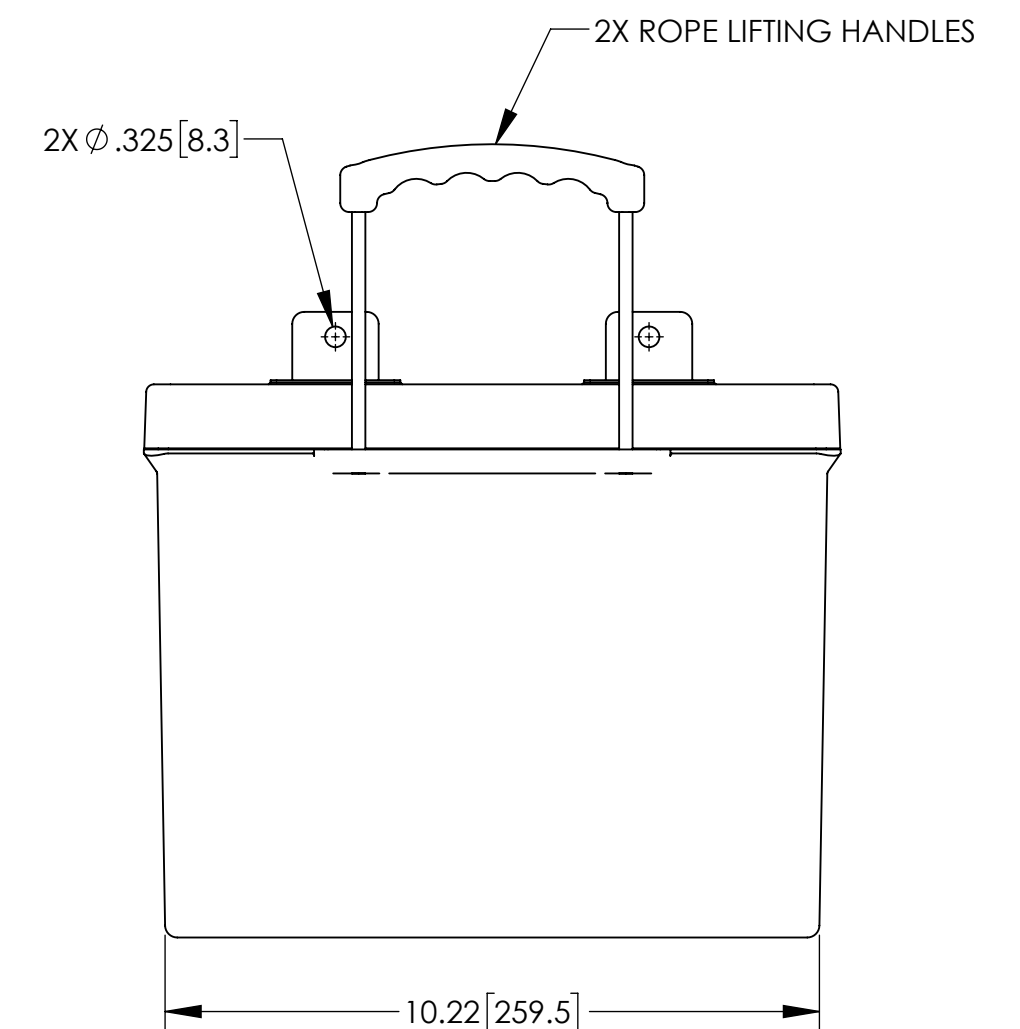
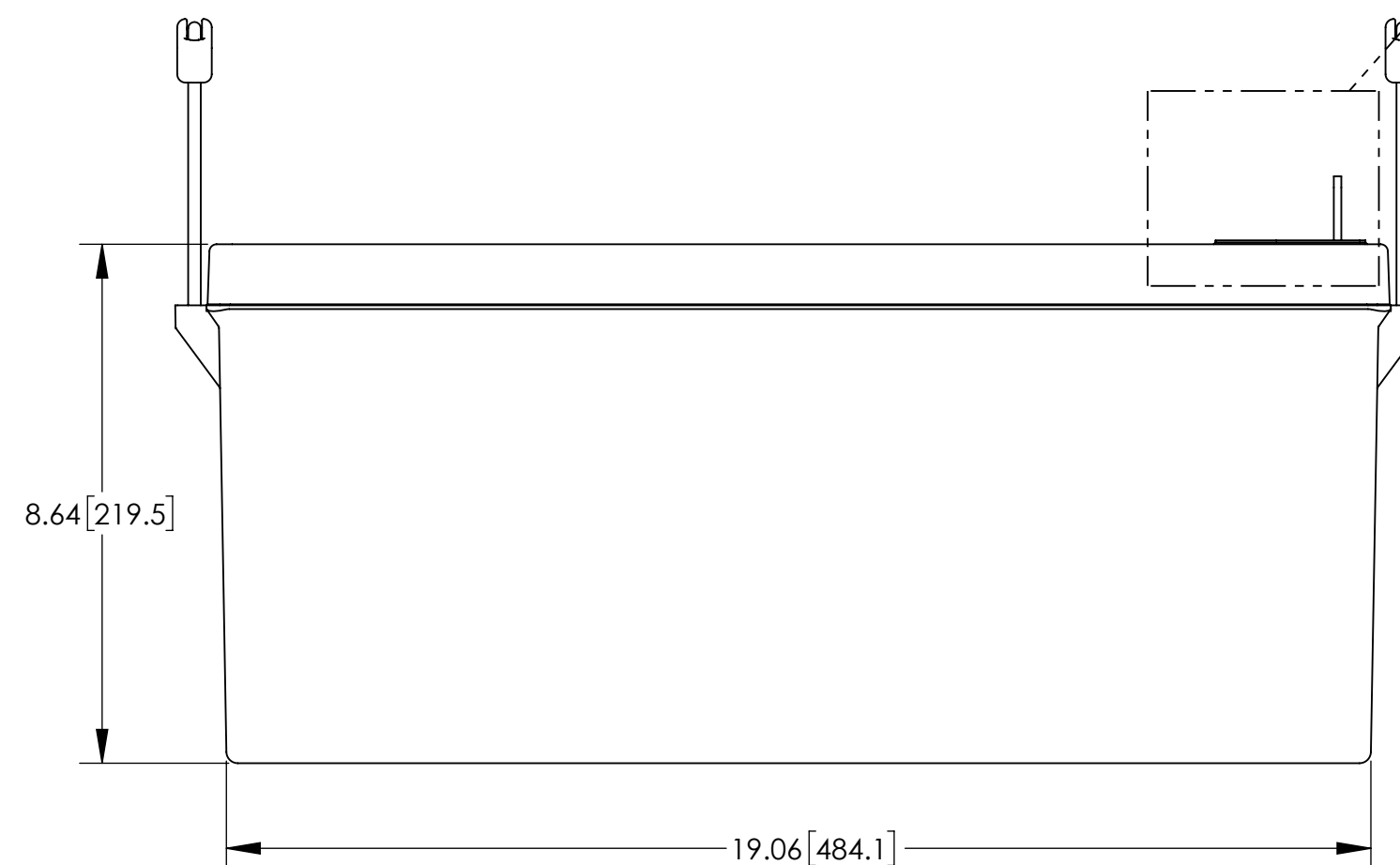
NOTES: UNLESS OTHERWISE SPECIFIED

1. SEE DRAWING NO. CB-00295 AND PROCEDURE P-1000 FOR ASSEMBLY AND TEST INSTRUCTION. PROCEDURES AND ASSEMBLY DRAWINGS ARE FOR INTERNAL USE ONLY.
2. ALL TESTING IS PERFORMED IAW BATTERY COUNCIL INTERNATIONAL STANDARDS.
3. DIMENSIONS ARE INCH [MILLIMETER].
4. TERMINAL HARDWARE KIT PROVIDED, PART NUMBER 6916.

REVISIONS			
REV	DESCRIPTION	DATE	APPROVED
A	UPDATED FOR EU 1542 COMPLIANCE	8/16/24	PH



HEAVY DUTY L-BLADE
SCALE 2 : 3



PART NUMBER	AGM-12255L
NOMINAL WEIGHT	156 LBS [70.8 KG]
NOMINAL VOLTAGE	12 VOLTS
RATED CAPACITY @ 20 HOUR RATE TO 1.75VPC @ 77°F (25°C)	255 AH
RATED ENERGY @ 20 HOUR RATE TO 1.75VPC @ 77°F (25°C)	3060 WH
NOMINAL INTERNAL RESISTANCE @ 77°F (25°C)	1.95 MILLIOHMS
MAXIMUM POWER @ 77°F (25°C)	18.5 KW
CAPACITY FADE	TYPICALLY 50% OR 80% AT EOL (USER DEFINED)
POWER FADE	TYPICALLY 50% OR 80% AT EOL (USER DEFINED)
ENERGY ROUND TRIP EFFICIENCY	80%

ENVELOPE DRAWING

UNLESS OTHERWISE SPECIFIED DIMENSIONS ARE IN INCHES TOLERANCES ARE:			CONTRACT NO.		CONCORDE BATTERY CORPORATION 2009 SAN BERNARDINO RD, W. COVINA, CA 91790		
FRACTIONS	DECIMALS	ANGLES	APPROVALS	DATE	TITLE		
±1/32	.XX ± .12 .XXX ± .060	± 1°	DRAWN N. SANCHEZ	7/22/20	BATTERY, 12 VOLT, AGM-12255L		
TREATMENT	NONE		CHECKED AMIII	7/23/20	SIZE	CAGE CODE	DWG NO.
FINISH	NONE		APPROVED PH	7/23/20	C	63017	AGM-12255L
SIMILAR TO	CALC WT		ISSUED DH	8/19/24	SCALE	1:3	REV A
							SHEET 1 OF 1